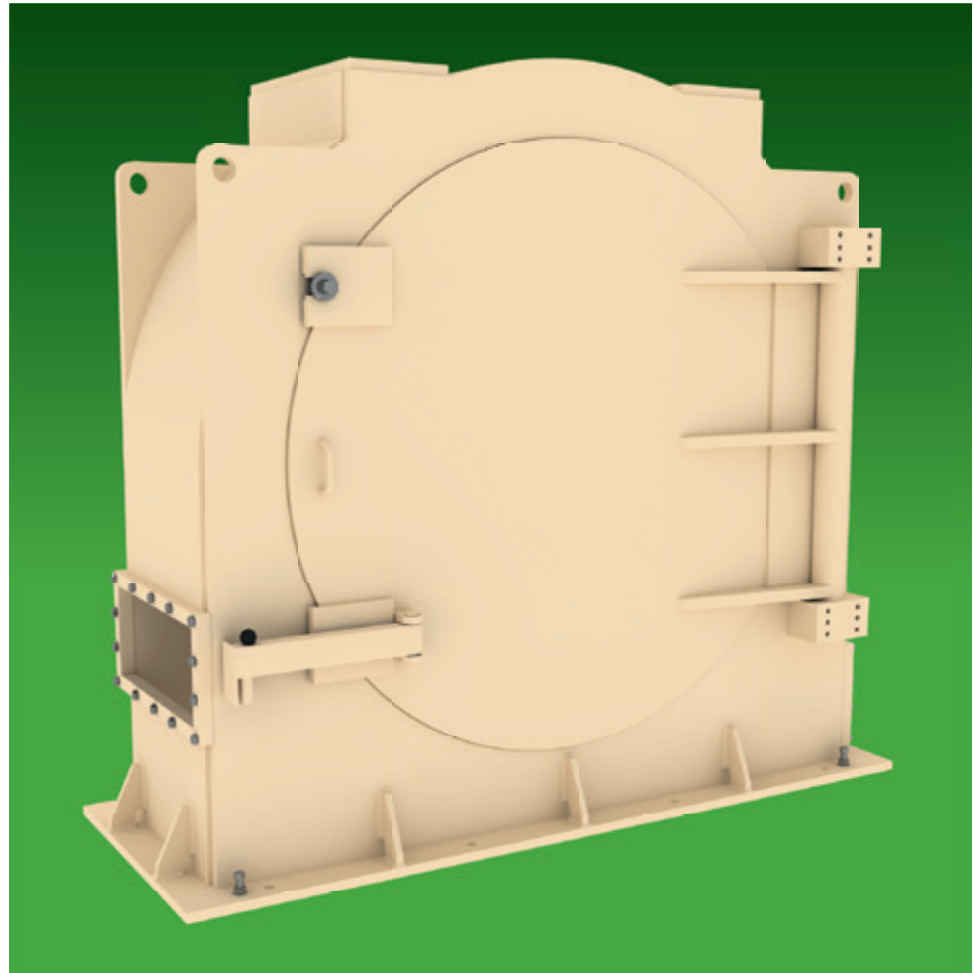




ML WOOD

Screen Refiner Mill ML-SRM

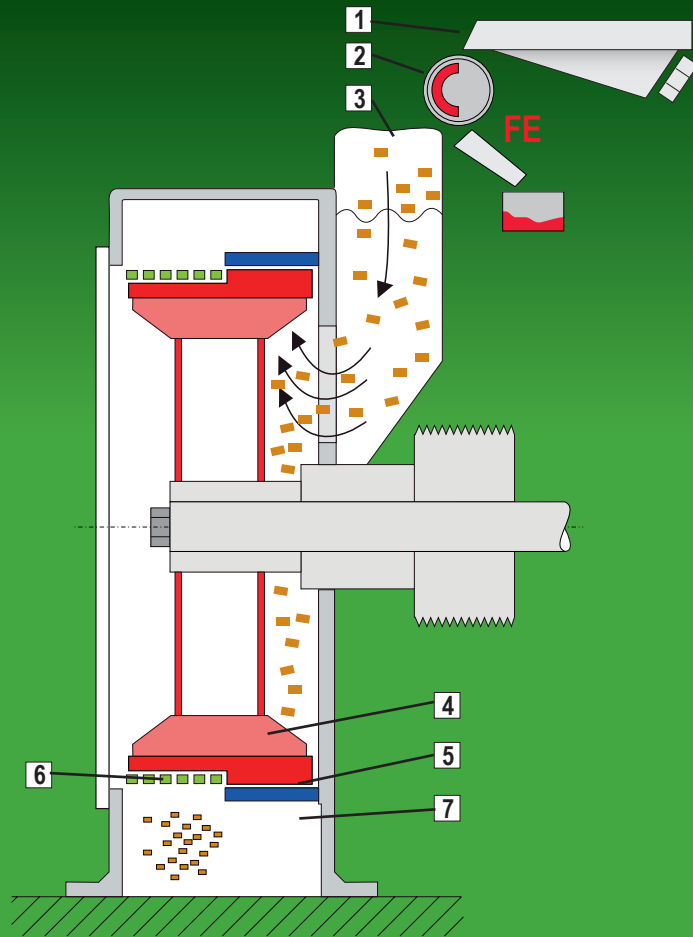


Mill for production of fines

- Exchangeable screen size
- Lateral material extraction
- Exchangeable grinding tracks



ML WOOD



- 1 Vibration conveyor
- 2 Magnet drum
- 3 Infeed
- 4 Rotor
- 5 Grinding track
- 6 Conidur screen
- 7 Discharge channel

Adjustable degree of fineness

- Different types of beater ledges
- Shape of grinding track
- Different width of mesh of Conidur screen
- Adjustment of rotor speed

Screen Refiner Mill ML-SRM

Moisture content up to 60%

- Material with a moisture content of up to 60 % depending on the screen perforation are milled into cubical particles.

Downstream screening

- Using an conidur screen the oversized are limited and a downstream screening might be unnecessary.

High availability

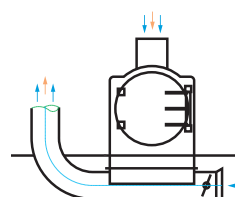
- Highly wear resistant grinding tracks ensure long time life

Short maintenance time

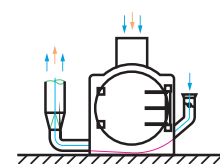
- Screen ring and grinding track can be removed and be easily equipped with new grinding tracks and screen.

Extraction system

- Optionally underfloor or lateral



underfloor



lateral

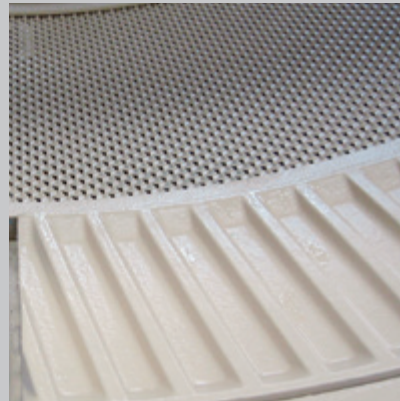


ML WOOD

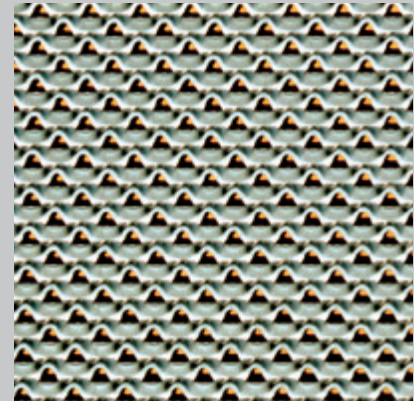
A number of profiles of grinding tracks

Feeding material:
moisture content: $u = 0 - 60 \%$

- Shavings and saw dust
- Knife ring flakes
- Flakes from residual wood
- Annual plants
- Chopped waste paper
- Flake material from inorganic substances
- Pellets and pre-crushed bricks



Standard grinding track



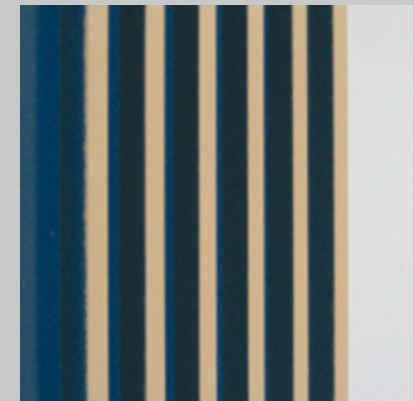
Conidur screen



Sharp-edged, hardened grinding track for soft wood



Z-shape to improve the grinding efficiency



Sharp-edged, hardened grinding tracks for fibrous wood and other material

- Production of cubical fine and finest flakes
- Production of core and surface layer material for particleboard production
- Production of filling and insulating material
- Fine-milling of spices and seeds
- Milling of bread
- Dust for blow in combustion



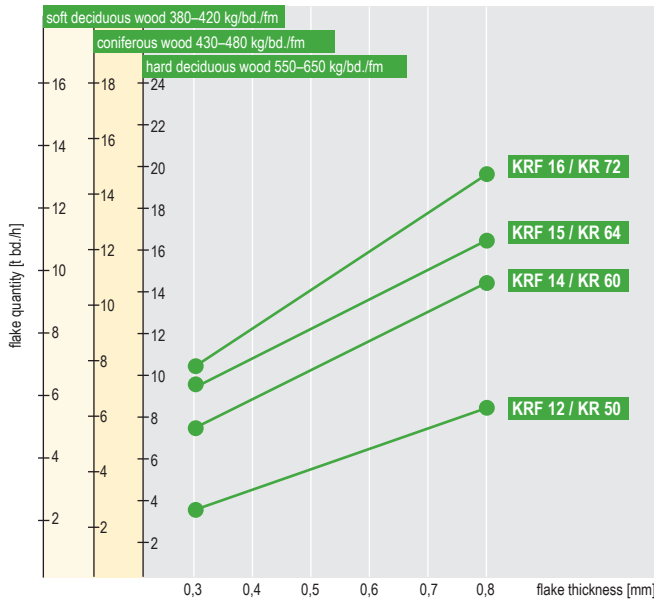
Stream optimized beater ledges,
beater ledges replaceable



Rotor with beater ledges
Conidur screen for fine milling



ML WOOD

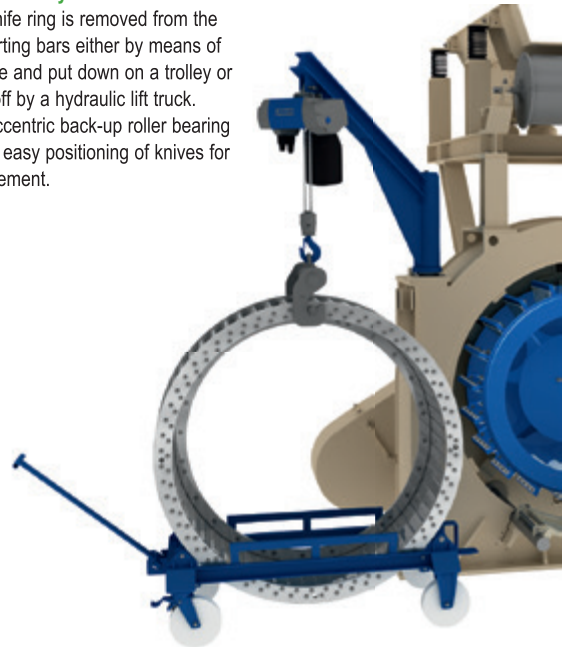


KRF performance specifications in relation to type of wood / flake thickness

The easy way to change a knife ring ...

Crane / Trolley

The knife ring is removed from the supporting bars either by means of a crane and put down on a trolley or lifted off by a hydraulic lift truck. The eccentric back-up roller bearing allows easy positioning of knives for replacement.



Knife Ring Flaker 12 – 16 | 1200 rpm or 1400 rpm

Type of Flaker	Type of knife ring	Length / width x height ¹⁾ (m)	Input power kW	Self-propelled air volume (m ³ /h)	Number of rotor blades	Length of knife (mm)	Number of flaking knives	Productive capacity (t bd./h) ²⁾	Weight (t)
12	KR 50	1,4 / 2,2 x 2,9	160/200	8.000	18	333	50	4 - 8	6
14	KR 60	1,7 / 2,4 x 3,0	250/315	10.000	21	463	60	6 - 12	8
15	KR 64	1,8 / 2,5 x 3,0	250/315	12.000	23	543	64	6 - 15	9
16	KR 72	1,8 / 2,7 x 3,3	355/400	14.000	25	648	72	7 - 20	10

Subject to technical modifications. Some of the machine equipment described here is available as an option. Upon inquiry, machines with a ring diameter of 800 mm or 1,000 mm can be delivered. ¹⁾ Height relating to the distance between floor and upper edge of swing arm. ²⁾ Productive capacity depends on bulk weight of fed-in chips.

ML WOOD

B. Maier & R. Loth GmbH
Wood Technology
An der Bleiche 9
33813 Oerlinghausen
Germany

Phone: +49 (0) 5202 / 99689-10
Fax: +49 (0) 5202 / 99689-90
E-Mail: info@ml-wood.com
Web: www.ml-wood.com